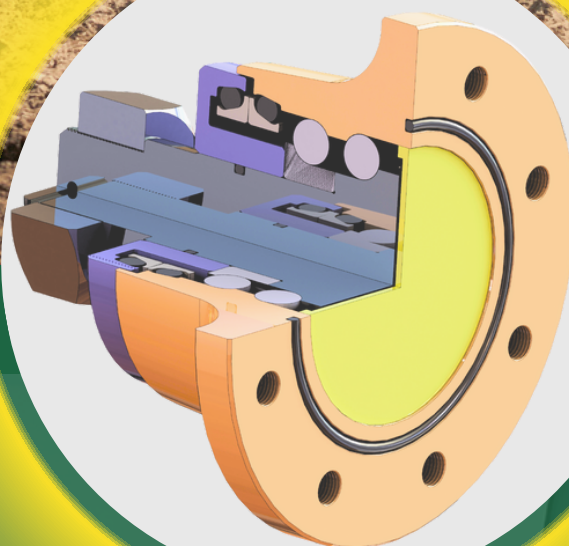


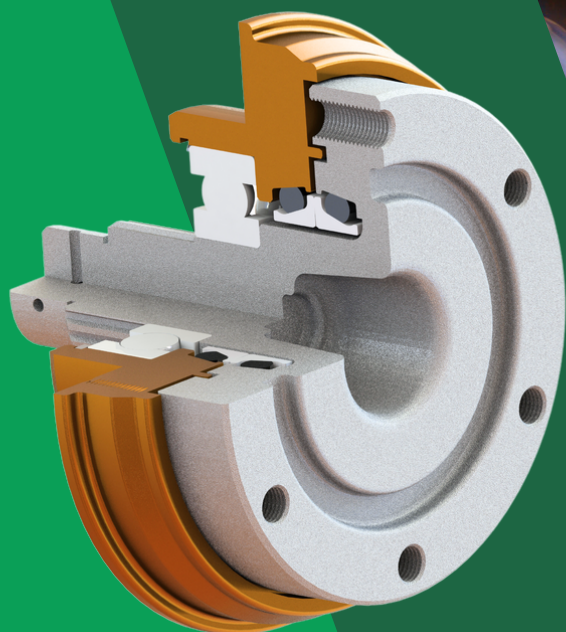
# SAP AGRI HUBS

SAP  
Parts

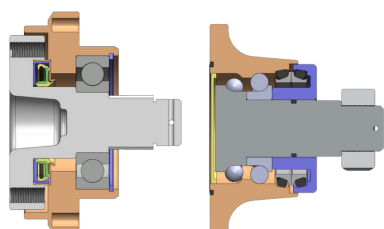


**NEXT-GENERATION UNITIZED  
AGRICULTURAL HUBS**





## SAP Agri Hubs Existing v/s New Topography

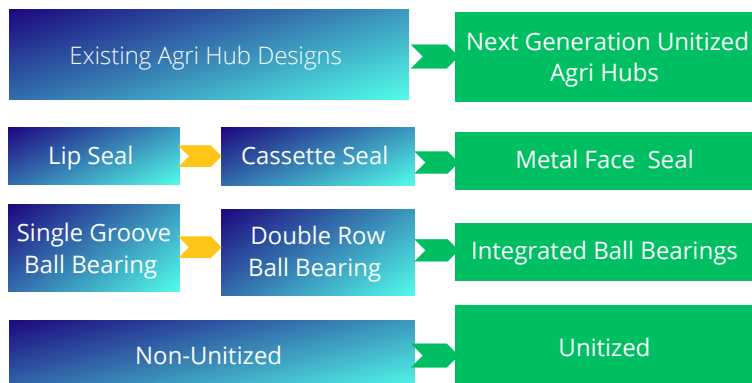


## SAP Parts Competencies -

- Proprietary Metal Face Seals Technology
- Testing and Validation
- Customer Specific design capabilities
- Patented Product Developed for Agriculture Tractor PTO

Factor	GEN-1	GEN-4
Sealing Effectiveness	X	✓
Ease of Assembly	X	✓
Bearing Integration	X	✓
Performance Life	X	✓
Bearing Floating Action	X	✓

## “Next-Gen Unitized SAP Agri Hubs”-



## Qualitative Benefits for OEMs -

Factor	Conventional Hubs	SAP - Agri Hubs
Assembly	Non Unitized Hubs	Unitized Concept
Sourcing	Multiple Sourcing	Single Sourcing vendor
Engineering Capabilities	Customer Design	SAP Parts Design
Testing	Customers Scope	SAP Parts Integrated Testing Bench & Field Testing

## Benefit for the Farmers -

**Productivity** -The Next Generation Unitized SAP Agri-hubs provide higher productivity due to the axial force sustenance, and lowering of the input torque which increases the overall yielding productivity .

**Savings** - Due to the integrated bearings, the complete assembly have a lifelong lubrication which results in lesser downtime and increased savings.

**Contamination** - The role of the metal face seal comes into light showcasing superior protection against contaminations which restricts the entry of foreign particles.